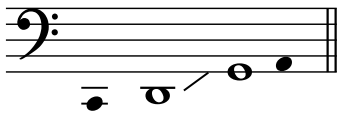


# ティンパニの音域

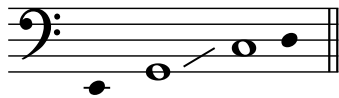
● = 音域（気温等によって変化）、○ = 演奏するのに理想的な音域

32 inch



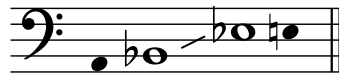
D — G  
(C — A)

30 inch



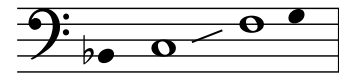
G — C  
(E — D)

28 inch



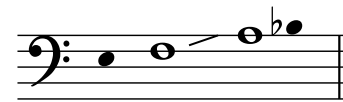
B $\flat$  — E $\flat$   
(A — E)

25 inch



C — F  
(B $\flat$  — G)

22.5 inch



F — A  
(E — B $\flat$ )